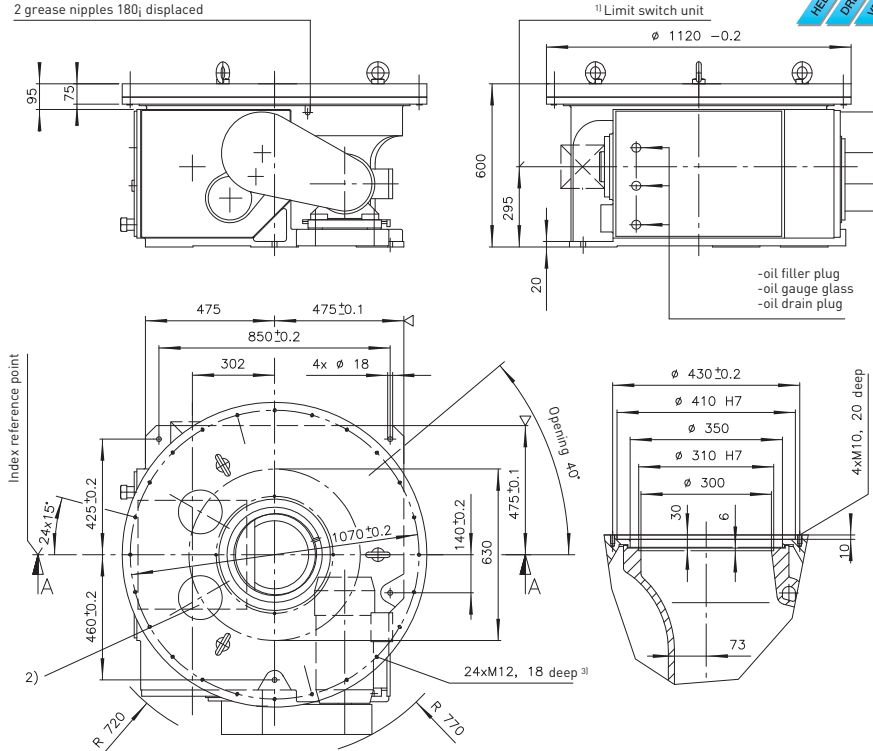


ED1120/A3720

Precision index drives for rotary motions

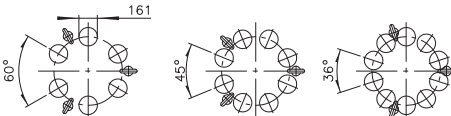
2 grease nipples 180 μ displaced



- oil filler plug
- oil gauge glass
- oil drain plug

²⁾ Location of the cam followers at the index reference point
(Free areas must be provided accordingly in the tool plate)

- 2/3/6 Indexing steps
6 cam followers
- 4/8 Indexing steps
8 cam followers
- 5/10 Indexing steps
10 cam followers



For transportation of the turntable witheybolts, 3 tapped holes M24x40 deep have been arranged on ζ 760.

¹⁾ For the dimensions of limit switch units, accessories or special design, please ask for a separate drawing.

³⁾ Standard fixing hole pattern.
Special hole pattern at extra price on request.

Technical data

Static bearing capacity of table plate bearing
(theoretic factors of the bearing manufacturer)

C_{OA} = 1660000 N

C_{OR} = 781000 N

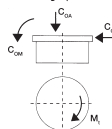
C_{OM} = 389000 Nm

Permissible resulting tangential moment, due to process related forces incurred while the table plate is at standstill: M_t = 13230 Nm

Order example:

ED1120 4 3,0 400 V - 50 Hz

└─ Motor data
└─ Cycle time
└─ Indexing steps
└─ Type



Indexing steps

Standard indexing steps: 2,3,4,5,6,8,10
further indexing steps on request

Tool plate Accuracy

Mounting of tool plate see drwg.
order: \pm 33 angular seconds

Total weight Motor Remark

High-precision performance upon request
approx. 1600 kg (depending on size of motor)
C-flange motor to requirements
This type range permits the construction of special models with different technical data. In order to prepare a detailed offer, we would need exact technical information.